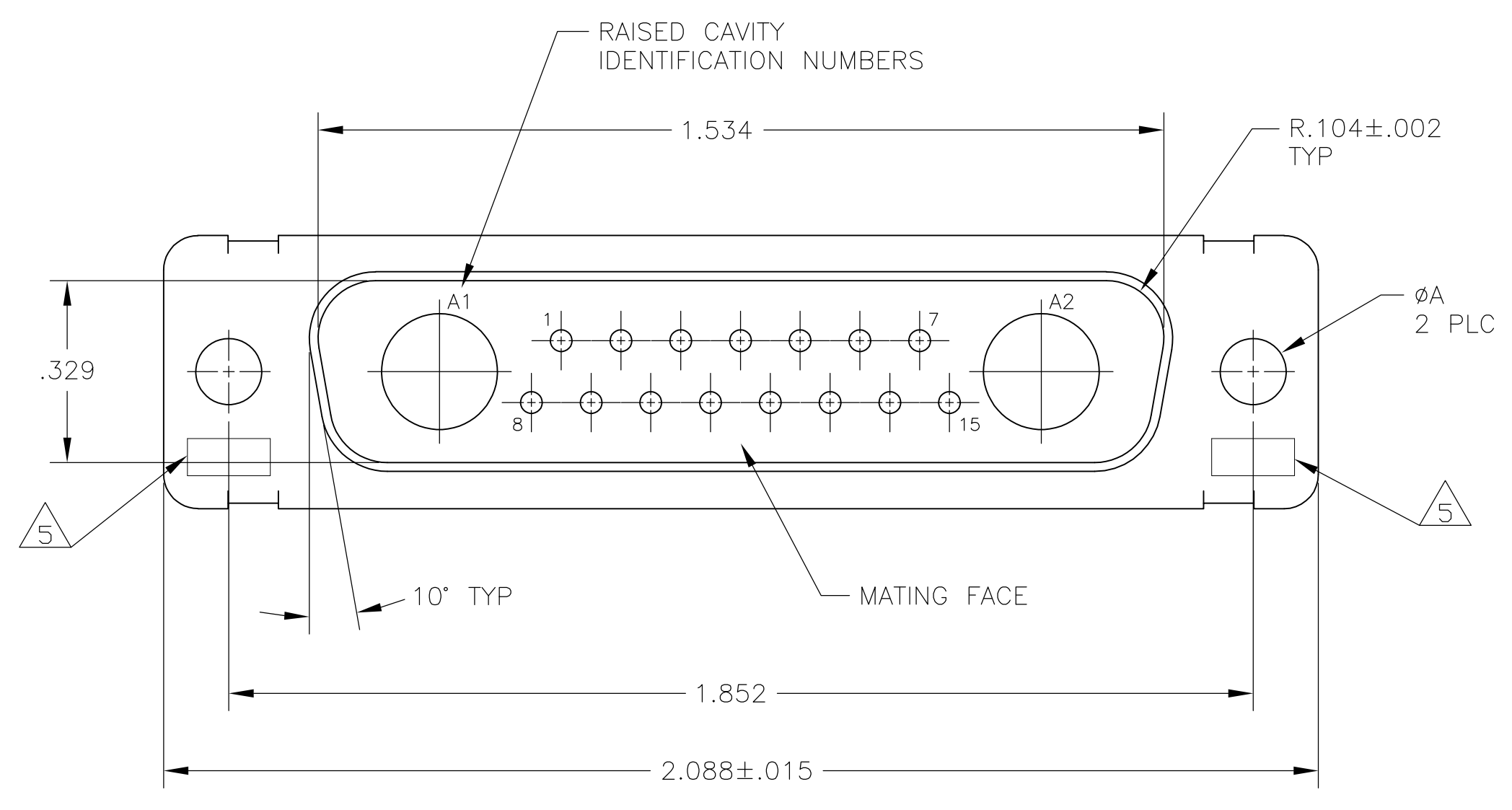
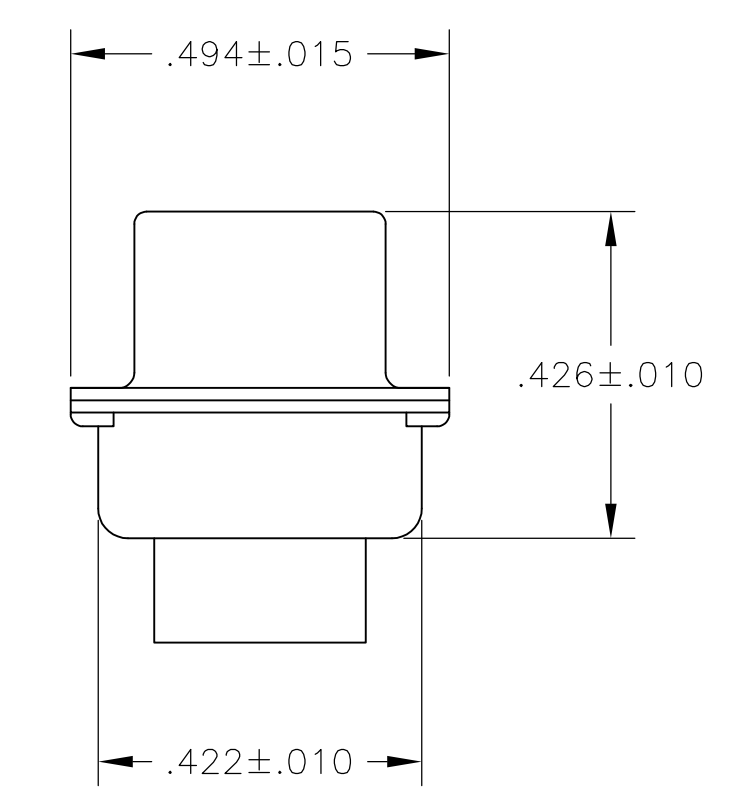
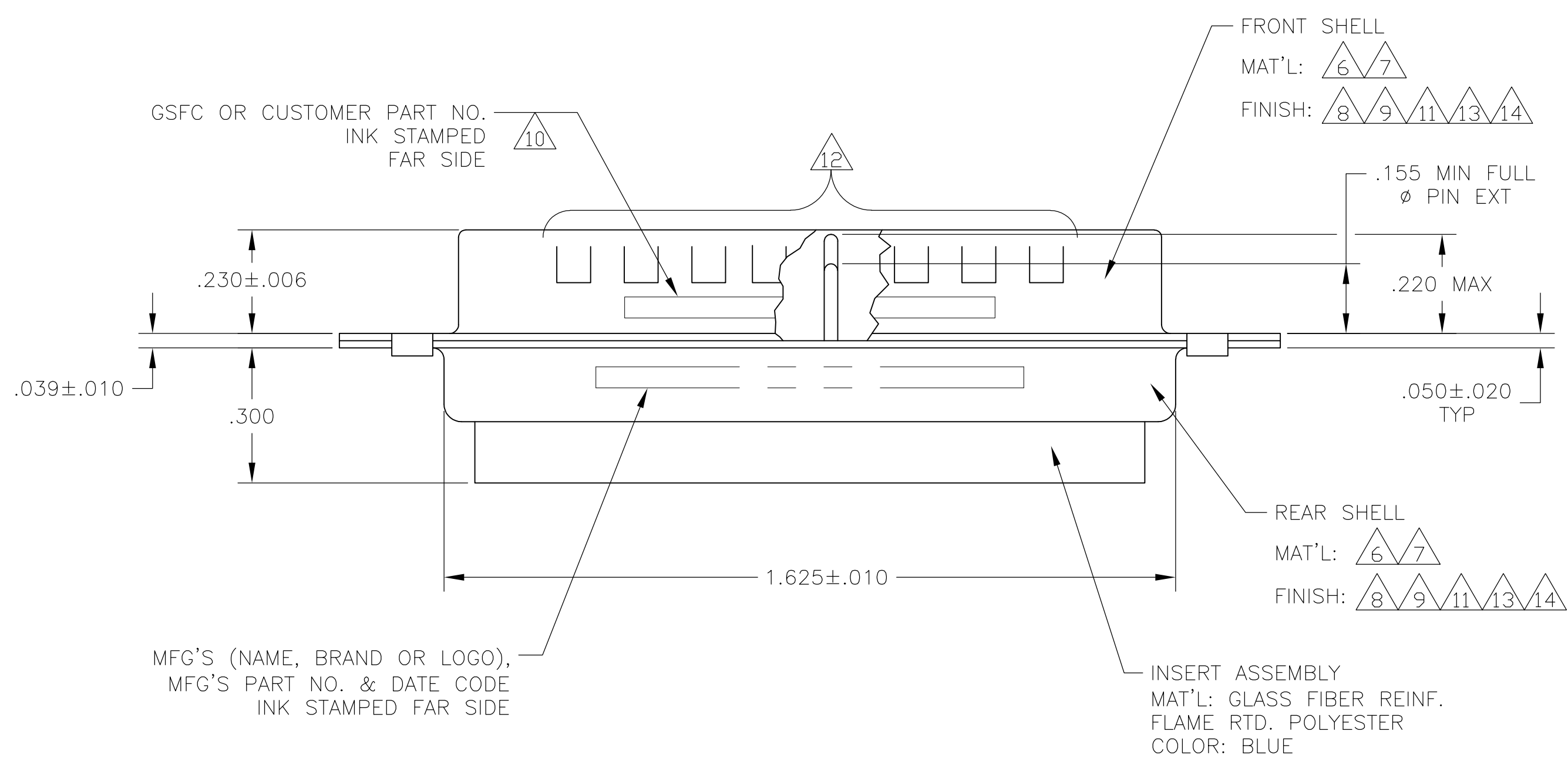


LOC	DIST	REVISIONS				
DF	DO	REV	DESCRIPTION	DATE	DRN	APPD
		G	REV PER ECO 05-014840	20JAN06	BL	CT
		H	REV PER ECO-08-018752	21AUG08	PK	BW

- THIS PLUG WILL MATE WITH ANY 17C2, SIZE 3 RECEPTACLE IN AMPLIMITE SERIES.
- MAXIMUM WIRE INSULATION TO BE USED WITH THIS PLUG IS  $\phi$ .068.
- THIS CONNECTOR ACCEPTS (2) POWER 8, OR COAX PIN CONTACTS IN POSITIONS A1 & A2, PURCHASED SEPARATELY.
- THIS CONNECTOR ACCEPTS SIZE 20 PIN SIGNAL CONTACTS IN POSITIONS 1 THRU 15, PURCHASED SEPARATELY.



- UL/CSA DESIGNATION STAMPED IN THIS AREA, OPTIONAL.
- STEEL PER ASTM-A-109.
- BRASS PER MIL-C-50 AND ASTM-B-36 UNS NO. C26000.
- CADMIUM PLATED PER QQ-P-416.
- GOLD PLATED PER MIL-G-45204 TYPE II, GRADE C, CLASS 1 OVER COPPER PER MIL-C-14550, CLASS IV.
- WESTINGHOUSE PART NO. 97942-645A935H05 INK STAMPED.
- FINISH: TIN PER ASTM-B-545 .000200 MIN THK OVER COPPER PER AMS2418 .000100-.000200 THK OR TIN-LEAD 93/7 .000200 MIN THK OVER COPPER PER AMS2418 .000100-.000200 THK.
- GROUNDING INDENTS FOR 212506-5 & 5-212506-5 ONLY.
- FINISH: TIN PER ASTM-B-545 .000200 MIN THK OVER COPPER PER AMS2418 .000100-.000200 THK.
- FINISH: ZINC PLATE PER ASTM-B-633 .000200-.000400 THK WITH SUPPLEMENTARY CHROMATE (Cr3+).



6, 14	.120	-	5-212506-1
6, 12, 13	.120	-	5-212506-5
6, 11, 12	.120	-	212506-5
7, 9	.154	311P405-13S-B-15	212506-4
6, 8, 10	.120	-	212506-3
7, 9	.120	311P405-13S-B-12	212506-2
6, 8	.120	-	212506-1
REMARKS	ØA	GSFC P/N	PART NO.

THIS DRAWING IS A CONTROLLED DOCUMENT.

DW	C.C. THOMAS	26-JAN-88	Tyco Electronics Corporation Harrisburg, PA 17105-3608
CHK	A. EMADI	29-JAN-88	
APPD	A. EMADI	29-JAN-88	NAME
PRODUCT SPEC			PLUG ASSEMBLY AMPLIMITE 17C2 SIZE 3, SERIES 109, COAX MIX
APPLICATION SPEC			SIZE
MATERIAL			WEIGHT
			CUSTOMER DRAWING

SCALE: 4:1 SHEET 1 OF 1 REV H